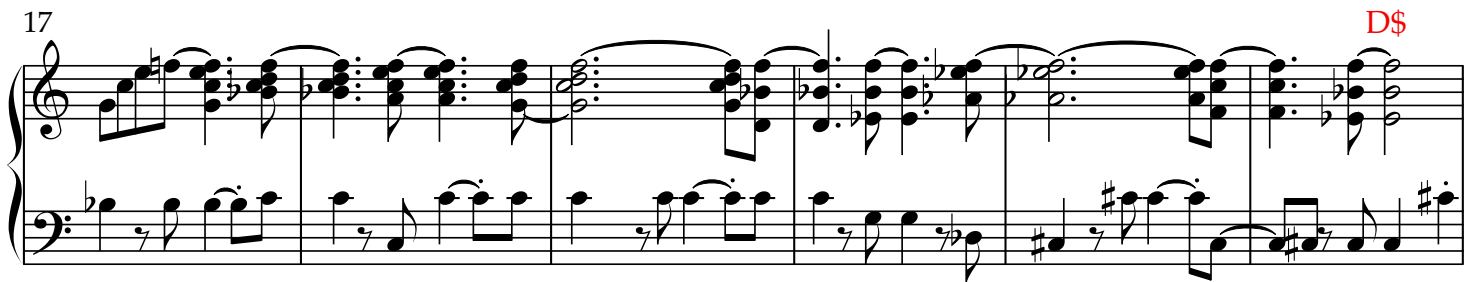
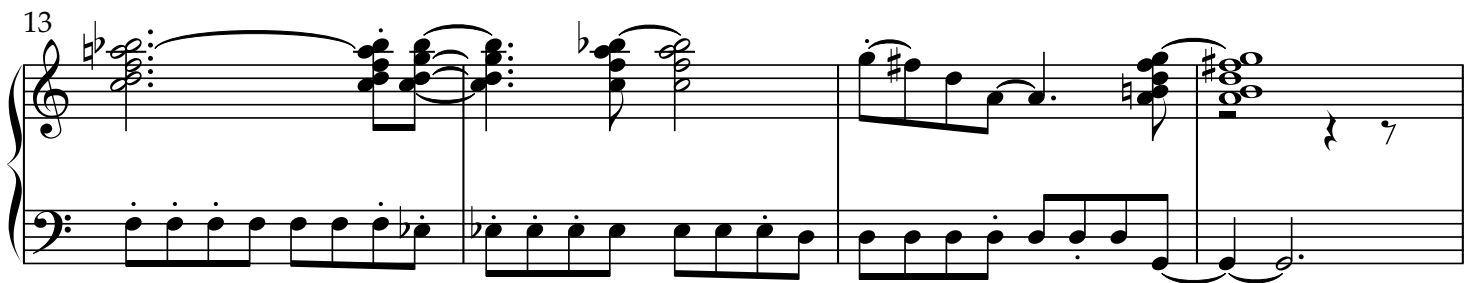
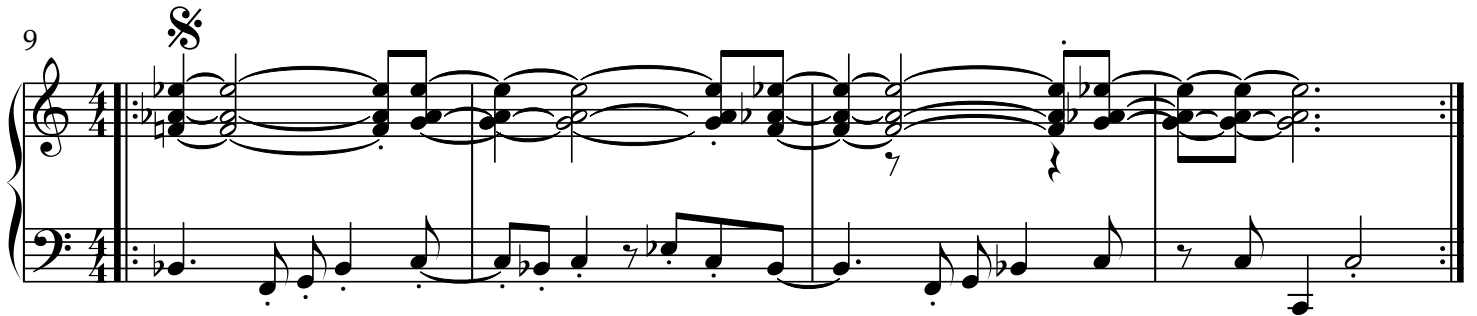
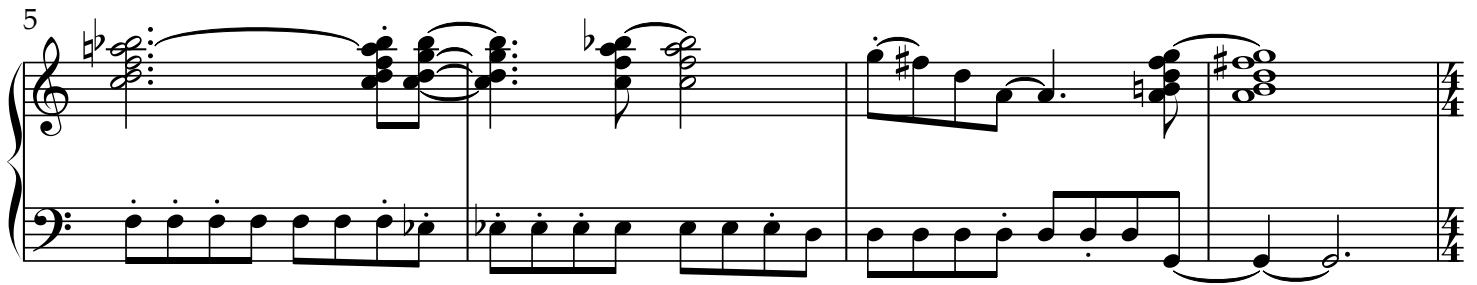
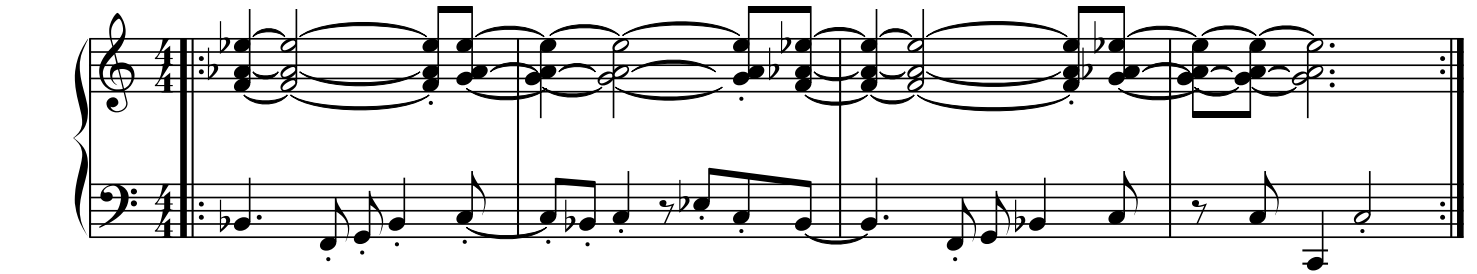


a i cindy

sean wayland
Arranged by



23

Measures 23-26 of a musical score. The key signature has two sharps (F# and C#). The music is written for piano with a treble and bass staff. Measures 23 and 24 feature complex chords in the treble and single notes in the bass. Measures 25 and 26 show a transition with more complex chords in the treble and notes in the bass.

27

open

Measures 27-30 of a musical score. The key signature has two sharps. Measures 27 and 28 have complex chords in the treble and notes in the bass. Measures 29 and 30 are marked 'open' and contain whole rests in both staves.

31

open

Measures 31-36 of a musical score. The key signature has two sharps. Measures 31-35 are marked 'open' and contain complex, flowing musical passages in both the treble and bass staves. Measure 36 ends with a final chord in the treble and a note in the bass.

37

Measures 37-40 of a musical score. The key signature has two sharps. Measures 37-39 feature complex musical passages in both staves. Measure 40 ends with a final chord in the treble and a note in the bass.